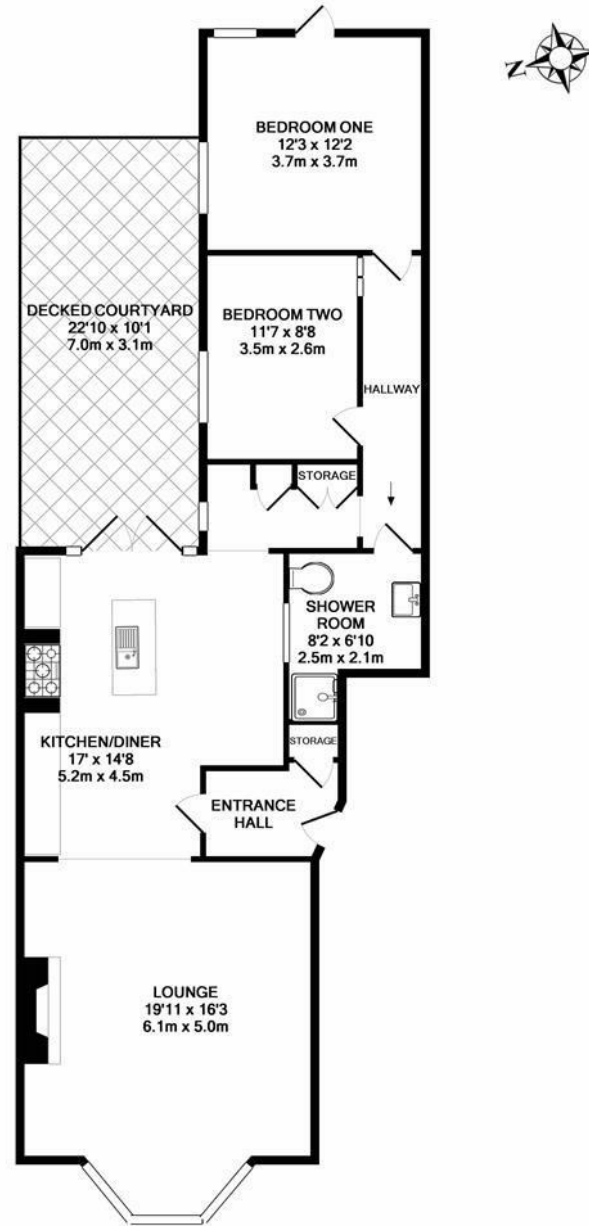




With a private front garden, rear yard and offered to the market with no onward chain! A stylish ground floor conversion apartment found in the heart of central Jesmond. A stone's throw from countless great shops and restaurants, West Jesmond Metro Station and indeed Newcastle city centre itself.

The property briefly comprises a communal entrance hall with telephone entry system; private entrance hall with storage cupboard; kitchen diner with an island, granite work surfaces and appliances including a John Lewis five burner gas hob/ electric oven & grill, an integrated AEG dishwasher and a Samsung American style fridge freezer; lounge measuring 19ft with walk in bay; utility area just off the kitchen diner leads to the rear hallway; shower room WC; two double bedrooms. Externally, a privately owned west facing front garden with hedge boundaries and to the rear, accessed by French doors from the kitchen diner, a private decked courtyard perfect for summer BBQ's!

Stylish Ground Floor Conversion Apartment | 972 Sq ft (90.3 m2) | Two Double Bedrooms | Open Plan Reception | Kitchen Diner | Utility Area | Shower Room | Central Jesmond Location | Private Front Garden & Rear Courtyard | GCH & DG | No Onward Chain | Leasehold - Share of Freehold - 964 Years Remaining | Service Charge £600 Per Annum | Council Tax Band C | EPC Rating: C



TOTAL APPROX. FLOOR AREA 972 SQ.FT. (90.3 SQ.M.)

Whilst every attempt has been made to ensure the accuracy of the floor plan contained here, measurements of doors, windows, rooms and any other items are approximate and no responsibility is taken for any error, omission, or mis-statement. This plan is for illustrative purposes only and should be used as such by any prospective purchaser. The services, systems and appliances shown have not been tested and no guarantee as to their operability or efficiency can be given.
Made with Metropix ©2017

Offers Over £300,000

IMPORTANT NOTE: These particulars and the descriptions and measurements herein do not constitute representation and whilst every effort has been made to ensure accuracy, this cannot be guaranteed.

